

AVERAGE DURATION

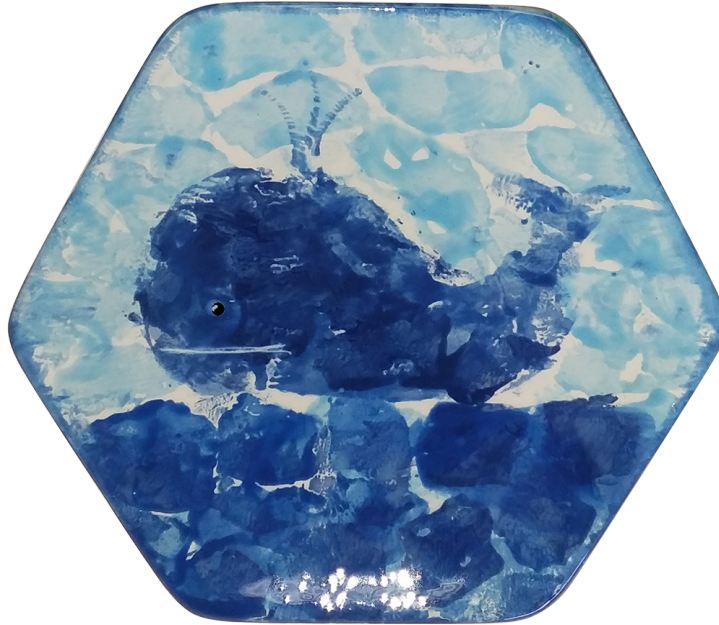
CHALLENGE LEVEL

2 hours



Paint a cute Blue Whale plate using paper paint and press technique.

BLUE WHALE PLATE



MATERIALS

- Honeycomb Salad Plate DB 37473
 - Sponge
 - Fan Brush
 - Paper
 - Template
 - Scissors
 - Small Round Brush
- Paints: 62, 2, 11, 47, 31

TIPS

•
Paint the back side of the whale cut out to make the print to appear as shown.

•
To make the little fountain on top of the whale, lightly load fan brush with color and gently touch the plate only with the curved edge of the brush. Practice point this on paper first.

THEME Creatures Of The Sea

TAGS Ceramic, Plate, BlueWhale

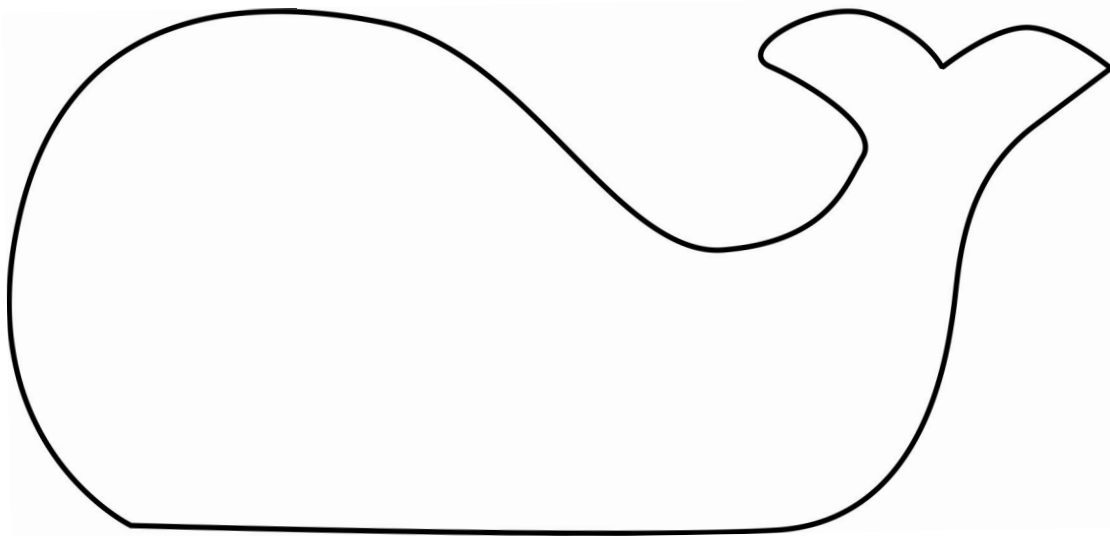
Color Me Mine

INSTRUCTIONS

1. Wipe bowl with damp sponge to remove bisque dust.
2. Cut out the whale shape from the template sheet.
3. Paint the back side of the paper shape using a fan brush and a blend of blues # 11 and # 2. Cover the shape with significant amount of underglaze.
4. Place the paper shape in the center of the plate painted side down and press on it to transfer the paint to the plate. See the position of the plate and placement of the whale in the sample photo.
5. Remove the paper to reveal the shape of the whale imprinted on the plate. If for some reason not all parts of the shape got transferred, simply reapply the paint to the paper, place the shape on top of the print and press on it again. Discard the paper shape when done.
6. Tear a few imperfect squares and rectangles sized about 1" to 1.5". Use the remaining paper from the template sheet.
7. Apply Blue # 47 to one of the paper squares and press it down on the plate. Repeat this process to cover the lower section of the plate with blue square impressions. Use the same paper square, or different ones to create the ocean water as shown. See sample image.
8. Use the same technique to cover the plate with light blue # 62 rectangular paper shape impressions. Leave some spaces between the impressions to create the illusion of air. It is OK to overlap the whale and the water shapes with light blue rectangles.
9. Use a Fan brush lightly loaded with # 11 to make a little fountain on top of the whale.
10. Use the back tip of a brush to scratch in the mouth and the eye of the whale.
11. Add a small black dot to the eye with # 31 and a small round brush.
12. Sponge the edges of the plate with # 47 to "frame" the image.

Color Me Mine

TEMPLATE



Color Me Mine